



Collection 2026



ECHTMETALL HPL · GENUINE METAL HPL



DI dekodur International

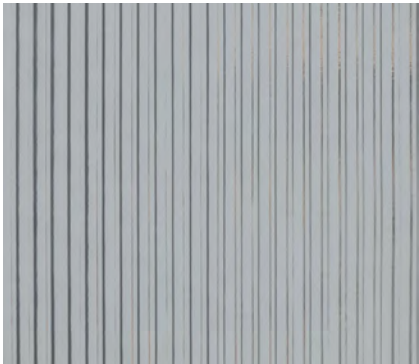
CURATED EXCELLENCE IN METALLIC HPL

DI dekodur International presents a **finely curated selection from more than 200 decors.**

Architectural genuine metals with **five unique structures.** High-quality HPL surfaces in metallic perfection. More HPL decors at dekodur.com

17 Exclusive Decors

Five unique structures · Three core variants · Endless possibilities



LINEAR

4 Decors



WOOD

6 Decors



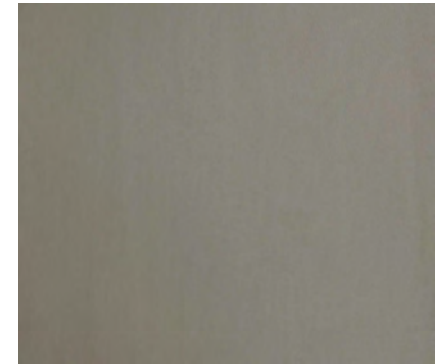
DIAMANT

3 Decors



TEXTILE

3 Decors



SMOOTH

1 Decor

CORE VARIANTS

Standard
ECO REACH
DekoFireSafe®

FORMAT

2440 × 1220 mm
Standard HPL size

COLOR FAMILIES

Silver · Copper
Champagne · Graphite



STRUCTURE 610

LINEAR

Vertical linear pattern for modern, elegant surfaces. The LINEAR structure embodies contemporary minimalism with its clean, precise lines that create a sense of height and sophistication.

Characteristics:

- Vertical linear texture
- Contemporary aesthetic
- Architectural elegance
- Ideal for elevator lobbies and modern interiors

4 Decors Available



Silver Real

A210 Linear

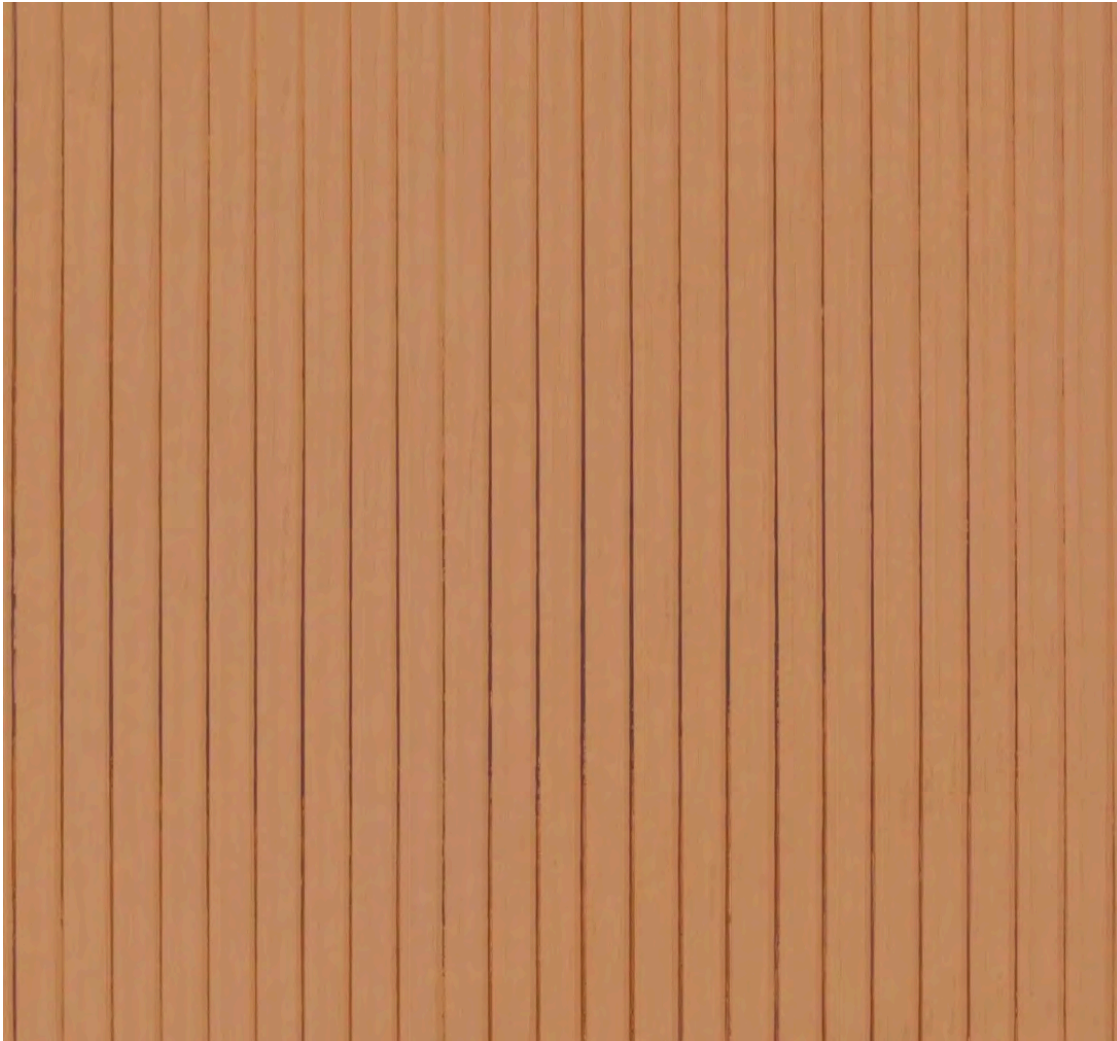
Art. 12792



Champagne Real

A211 Linear

Art. 12791



Copper Real

A212 Linear

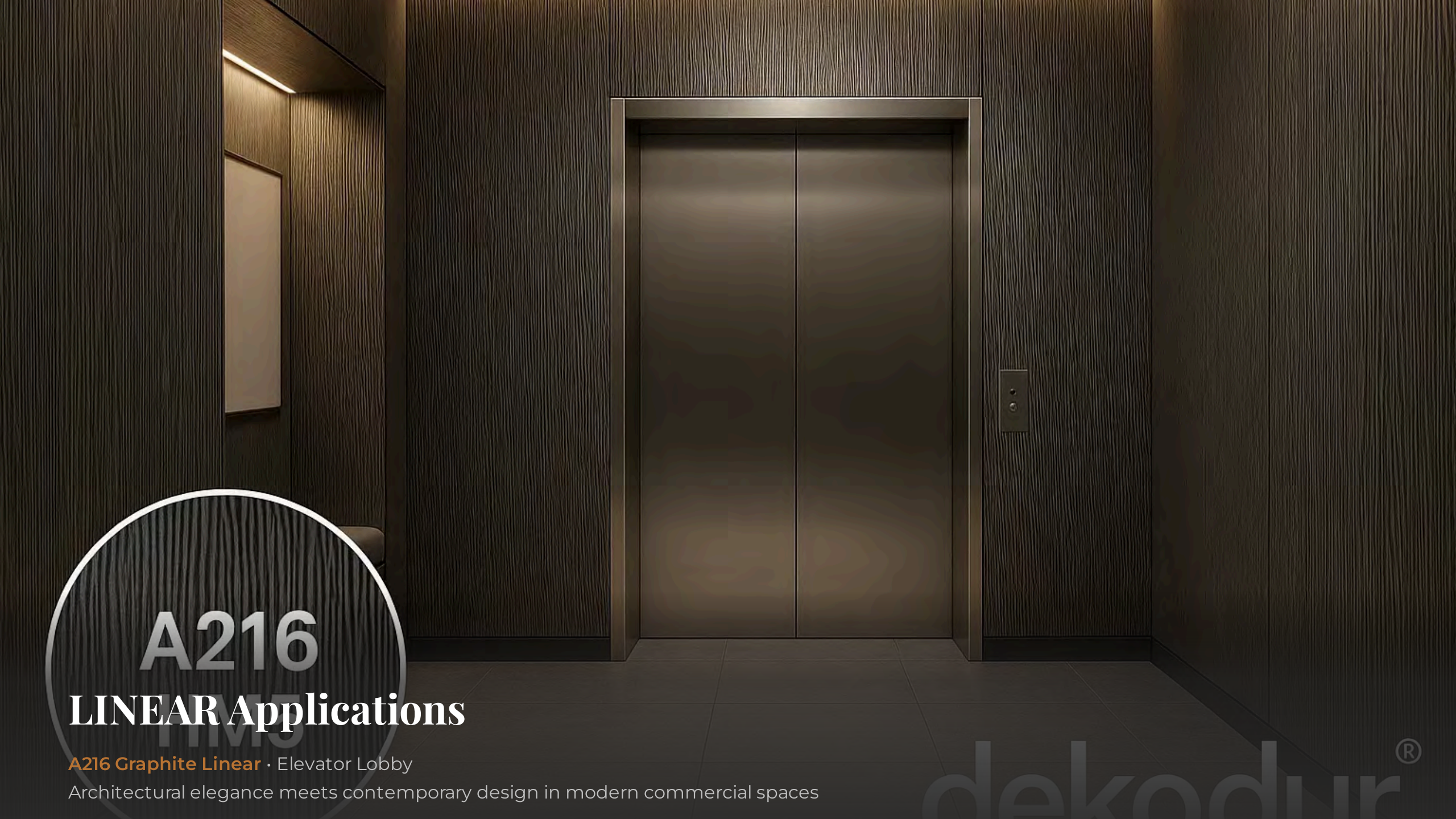
Art. 22432



Graphite Real

A216 Linear

Art. 11923



A216

LINEAR Applications

A216 Graphite Linear • Elevator Lobby

Architectural elegance meets contemporary design in modern commercial spaces

dekodur®



STRUCTURE HM5

WOOD

Fine-textured wood-metal decors with natural haptic quality. The WOOD structure combines organic warmth with metallic sophistication, creating surfaces that feel as authentic as they look.

Characteristics:

- Natural wood texture
- Metallic shimmer
- Tactile depth
- Ideal for residential and hospitality interiors

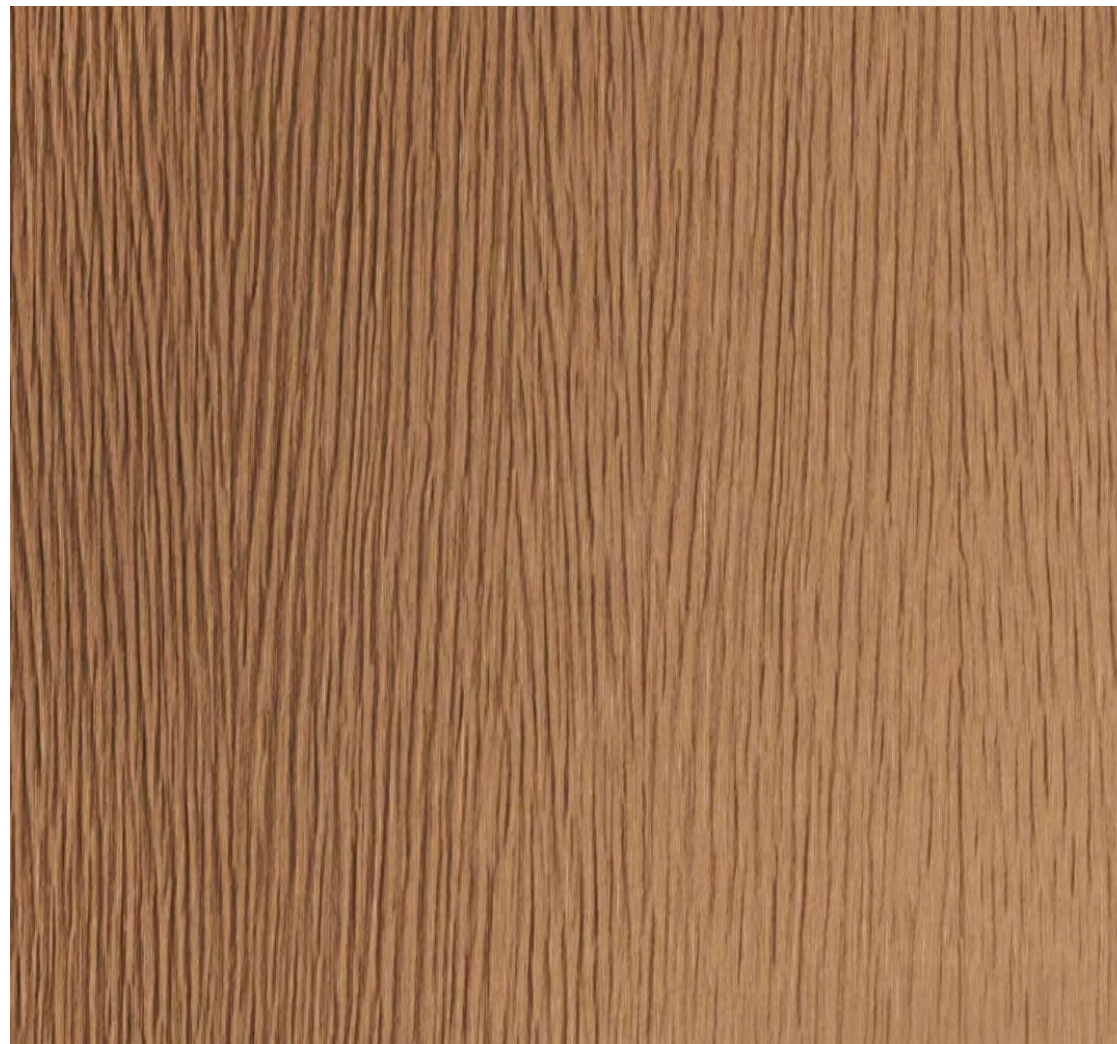
6 Decors Available



Champagne Grain

A211 Wood

Art. 16889



Copper Silk

A212 Wood

Art. 20202



Graphite Wood

A216 Wood

Art. 22403



Silver Ash

A226 Wood

Art. 22486



Natural Oak Metal

A252 Wood

Art. 22404



Brushed Bronze

A253 Wood

Art. 22405



WOOD Applications

A253 Brushed Bronze Wood • Residential Living Room

Warm elegance and natural sophistication in contemporary residential design



STRUCTURE DIA

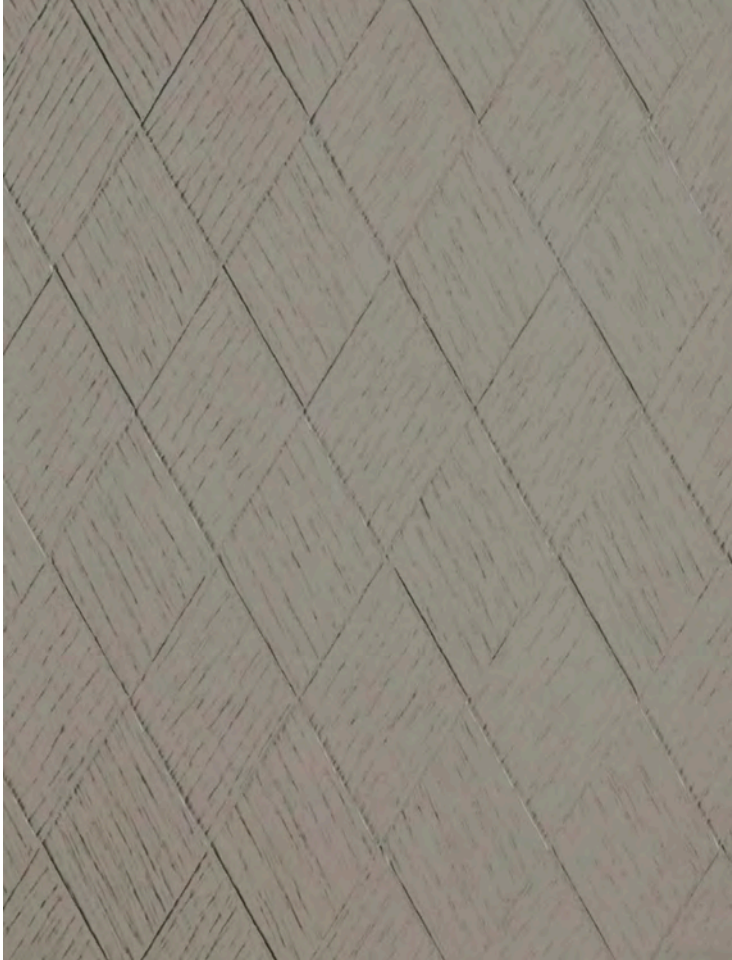
DIAMANT

Geometric diamond pattern for sophisticated designs. The DIAMANT structure features angular precision and visual depth, creating surfaces that capture light and attention in equal measure.

Characteristics:

- Geometric diamond pattern
- Angular precision
- Visual depth and dimension
- Ideal for statement walls and feature surfaces

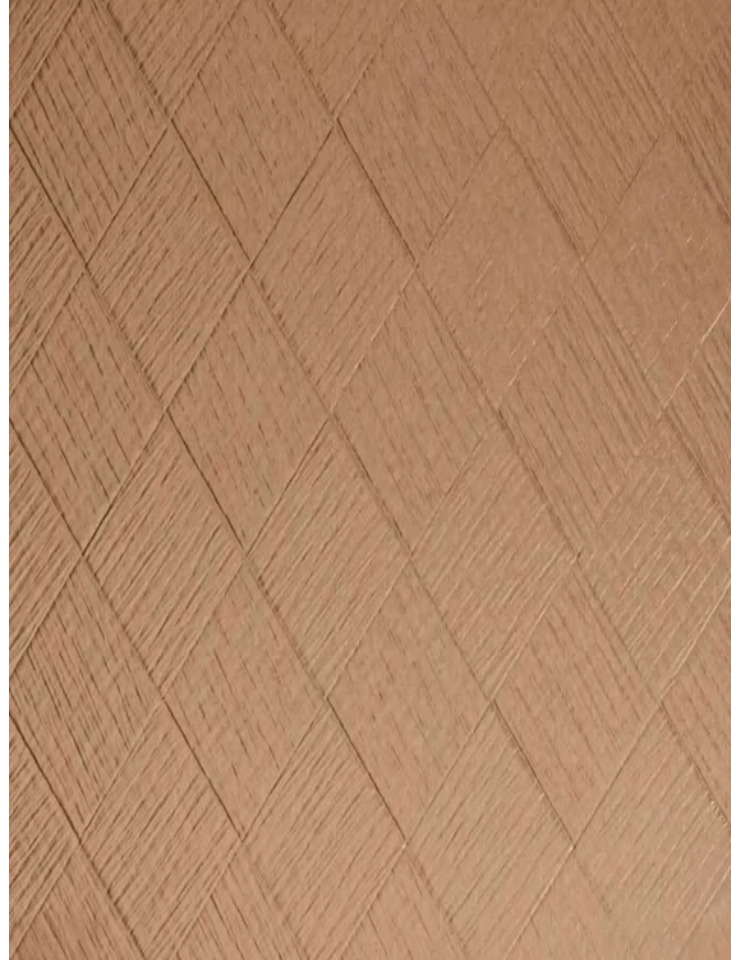
3 Decors Available



Silver Diamant

A226 Diamant

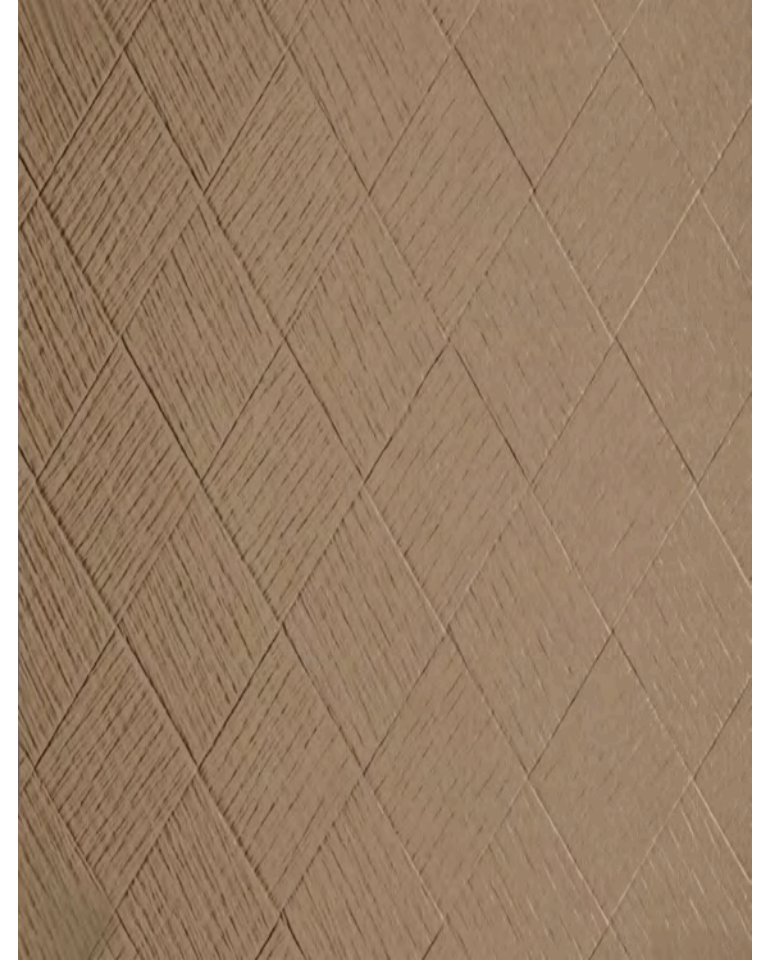
Art. 22481



Copper Diamant

A252 Diamant

Art. 22174



Champagne Diamant

A253 Diamant

Art. 22435



STRUCTURE SQE

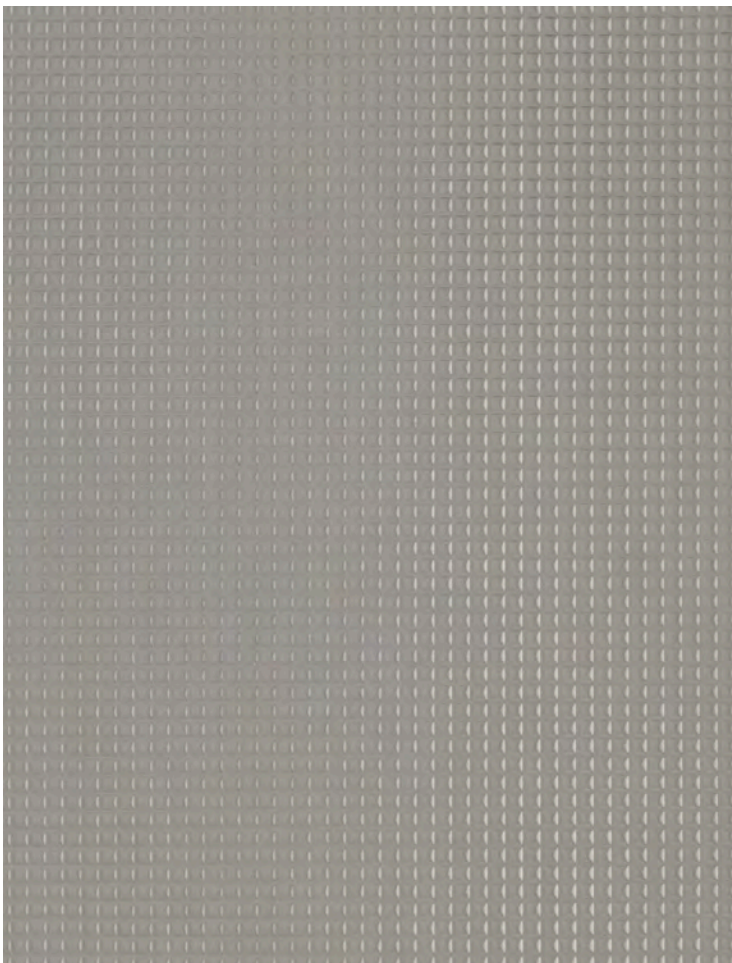
TEXTILE

Structured textile pattern with tactile depth. The TEXTILE structure evokes the appearance of woven fabric, bringing sophisticated texture and visual interest to architectural surfaces.

Characteristics:

- Woven textile appearance
- Tactile depth and texture
- Sophisticated pattern
- Ideal for hospitality and high-end commercial spaces

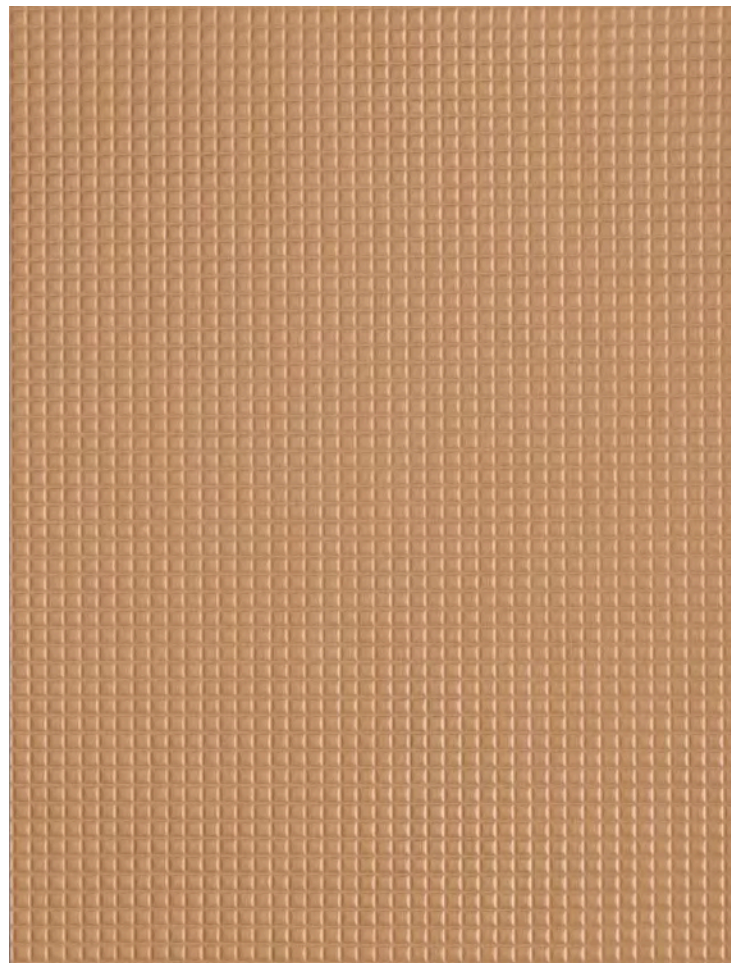
3 Decors Available



Silver Weave

A226 Textile

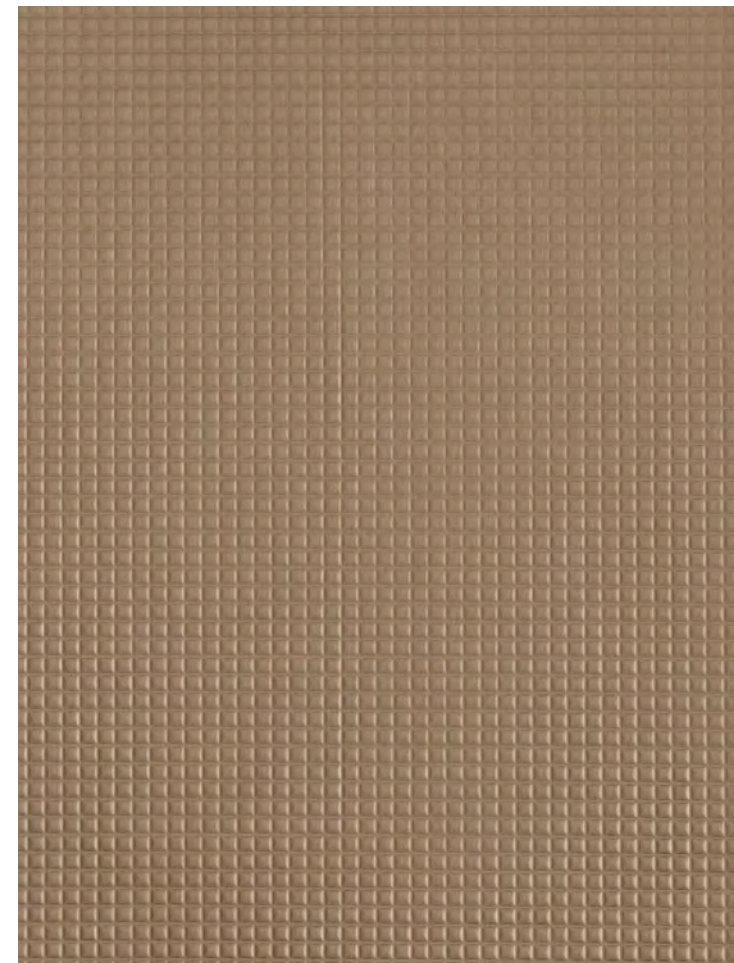
Art. 22498



Copper Weave

A252 Textile

Art. 22400



Champagne Weave

A253 Textile

Art. 22401



STRUCTURE GLA

SMOOTH

Super-matte surface for purist aesthetics. The SMOOTH structure embodies minimalist perfection with its flawless, non-reflective finish that emphasizes form and material purity.

Millfinish Steel

A226 Smooth

Art. 22471

Minimalist perfection in super-matte metallic finish

SUSTAINABLE CHOICE

ECO REACH Core

Ultra-Low Formaldehyde Emission

The ECO REACH core variant sets new standards in environmental responsibility and indoor air quality. Certified by EPH Dresden.

- ✓ Formaldehyde emission < 0.005 ppm (DIN 16516)
- ✓ 10× better than REACH E0 standard
- ✓ EPH Dresden certified quality
- ✓ Ideal for health-conscious projects
- ✓ Schools, hospitals, residential spaces
- ✓ Available for all article numbers

DIN 16516 Certified • EPH Dresden

FIRE PROTECTION

DekoFireSafe® Core

A2-s1,d0 Fire Classification

The DekoFireSafe® core variant provides superior fire protection for public spaces and high-safety requirements. Non-combustible performance.

- ✓ Fire protection class A2-s1,d0 (DIN EN 13501-1)
- ✓ Non-combustible material classification
- ✓ Low smoke production (s1)
- ✓ No flaming droplets (d0)
- ✓ Ideal for public buildings and escape routes
- ✓ Available for all article numbers

DIN EN 13501-1 Certified • A2-s1,d0



Standard Core

Phenolic kraft paper impregnate

The Standard core variant represents decades of proven HPL technology and reliability.

Phenolic kraft paper impregnate construction delivers consistent quality and performance across all applications, with complete article number availability.



Proven
quality

17

All article
numbers



Reliable
choice



A216 Graphite Linear · Commercial Elevator Hall



A216 Graphite Linear · Elevator Interior

Design References

From **commercial elevator lobbies** to **residential living spaces**, from **hospitality interiors** to **corporate environments** — Collection 2026 demonstrates unparalleled versatility and premium quality across diverse architectural applications.

Technical Information

FORMAT

2440 × 1220 mm

Standard HPL panel size

Custom formats available on request

STRUCTURES

610 LINEAR — Vertical linear pattern

HM5 WOOD — Fine-textured wood-metal

DIA DIAMANT — Geometric diamond

SQE TEXTILE — Structured textile

GLA SMOOTH — Super-matte surface

COLOR FAMILIES

Silver • Copper • Champagne • Graphite

CORE VARIANTS

ECO REACH — Formaldehyde < 0.005 ppm

(DIN 16516)

DekoFireSafe® — Fire class A2-s1,d0

(DIN EN 13501-1)

Standard — Phenolic kraft paper

SURFACE PROPERTIES

Genuine metal appearance

Easy to clean

Tactile texture

UV-stable

Scratch-resistant

APPLICATIONS

Elevator lobbies

Commercial interiors

Wall cladding

Residential design

Furniture surfaces



DI Dekordur International

GmbH & Co KG

ADDRESS

Langenthaler Str. 4
69434 Hirschhorn, Germany

PHONE

+49 6272 689-0

EMAIL

info@dekodur.de

WEBSITE

dekodur.world
dekodur.de
dekodur.com



Collection 2026 — Echtmetall HPL

dekodur.com