

dekodur®

Collection 2026

Genuine Metal HPL





DI dekodur International

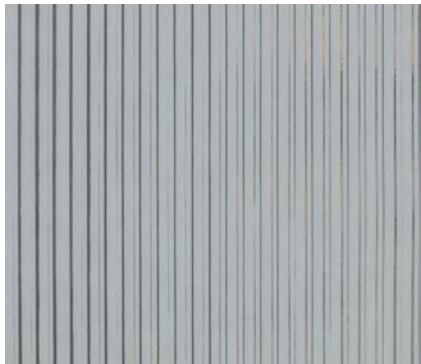
CURATED EXCELLENCE IN METALLIC HPL

DI dekodur International presents a **finely curated selection from more than 200 decors.**

Architectural genuine metals with **five unique structures.** High-quality HPL surfaces in metallic perfection. More HPL decors at [dekodur.com](https://www.dekodur.com)

19 Exclusive Decors

Five unique structures · Three core variants · Endless possibilities



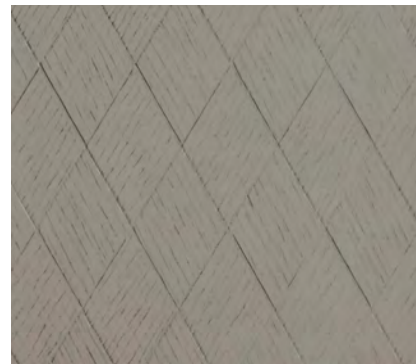
LINEAR

4 Decors



WOOD

6 Decors



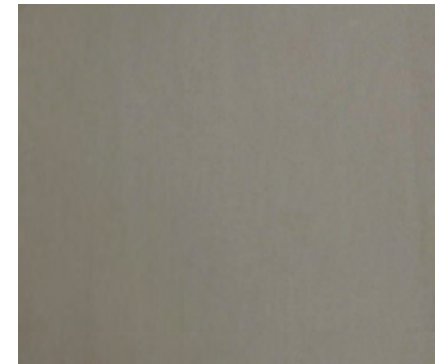
DIAMANT

3 Decors



TEXTILE

3 Decors



SMOOTH

3 Decors

CORE VARIANTS

Standard
ECO REACH
DekoFireSafe®

FORMAT

2440 × 1220 mm
Standard HPL size

COLOR FAMILIES

Silver · Copper
Champagne · Graphite



STRUCTURE 610

LINEAR

Vertical linear pattern for modern, elegant surfaces. The LINEAR structure embodies contemporary minimalism with its clean, precise lines that create a sense of height and sophistication.

Characteristics:

- Vertical linear texture
- Contemporary aesthetic
- Architectural elegance
- Ideal for elevator lobbies and modern interiors

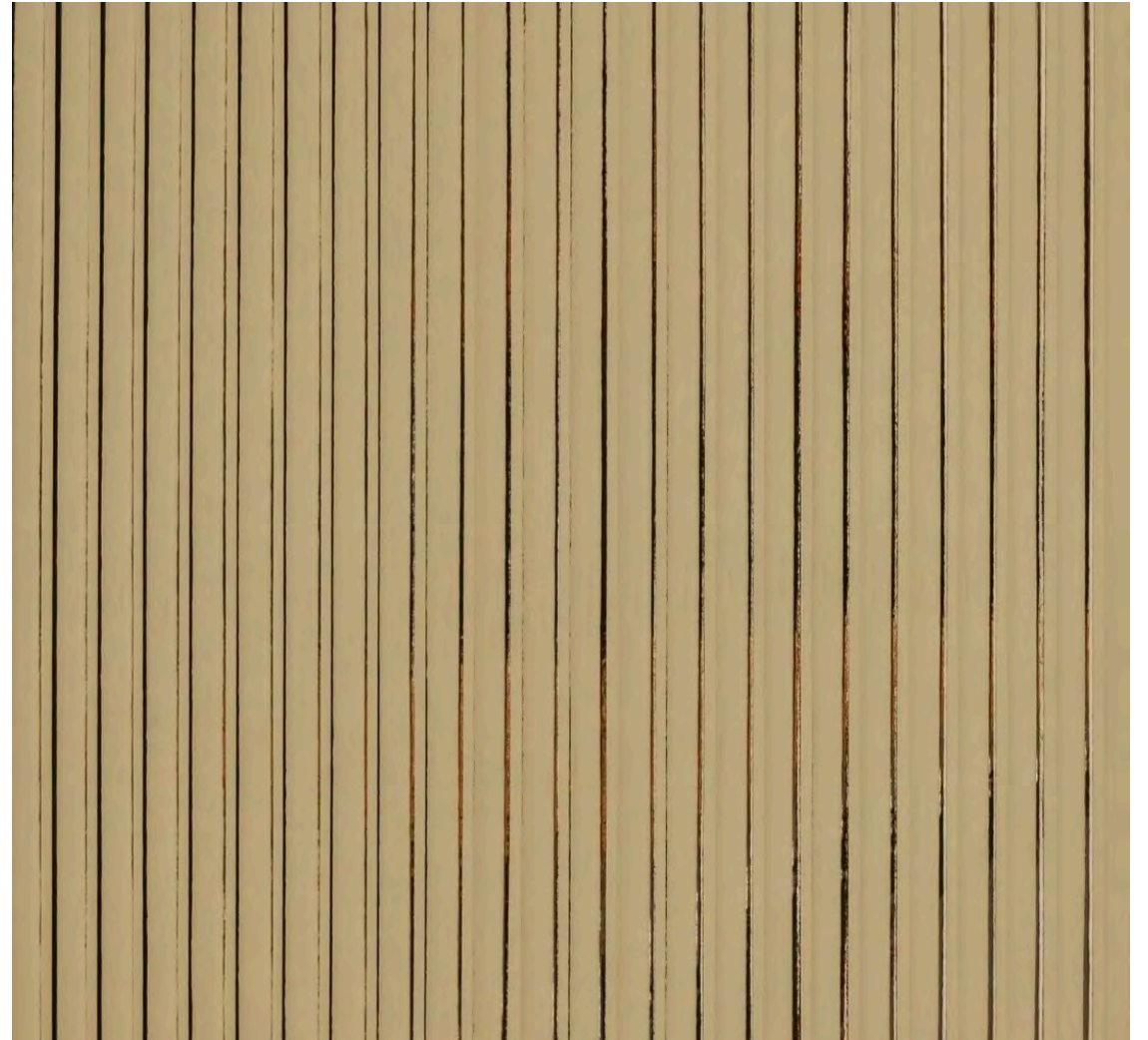
4 Decors Available



Silver Real

A210 Linear

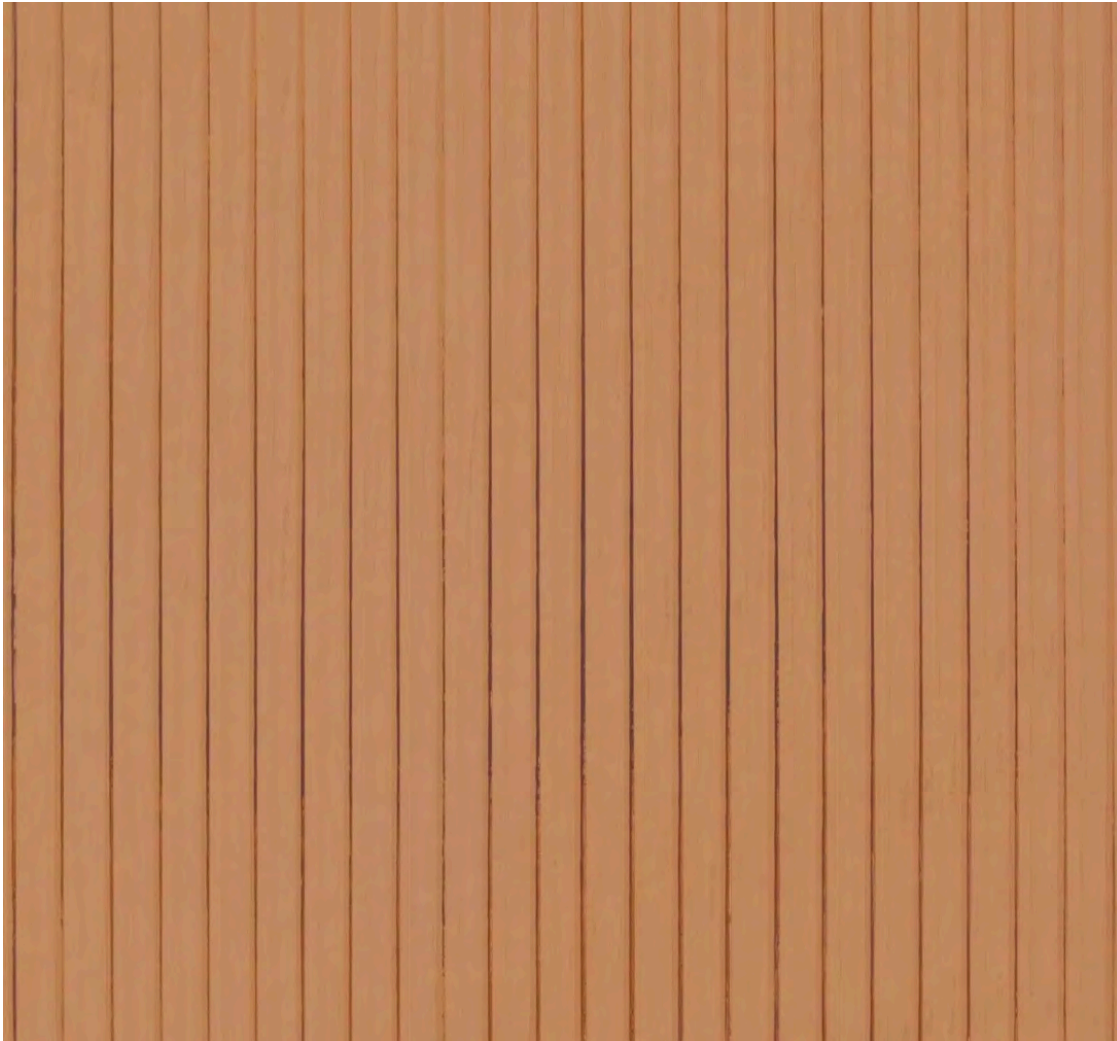
Art. 12792



Champagne Real

A211 Linear

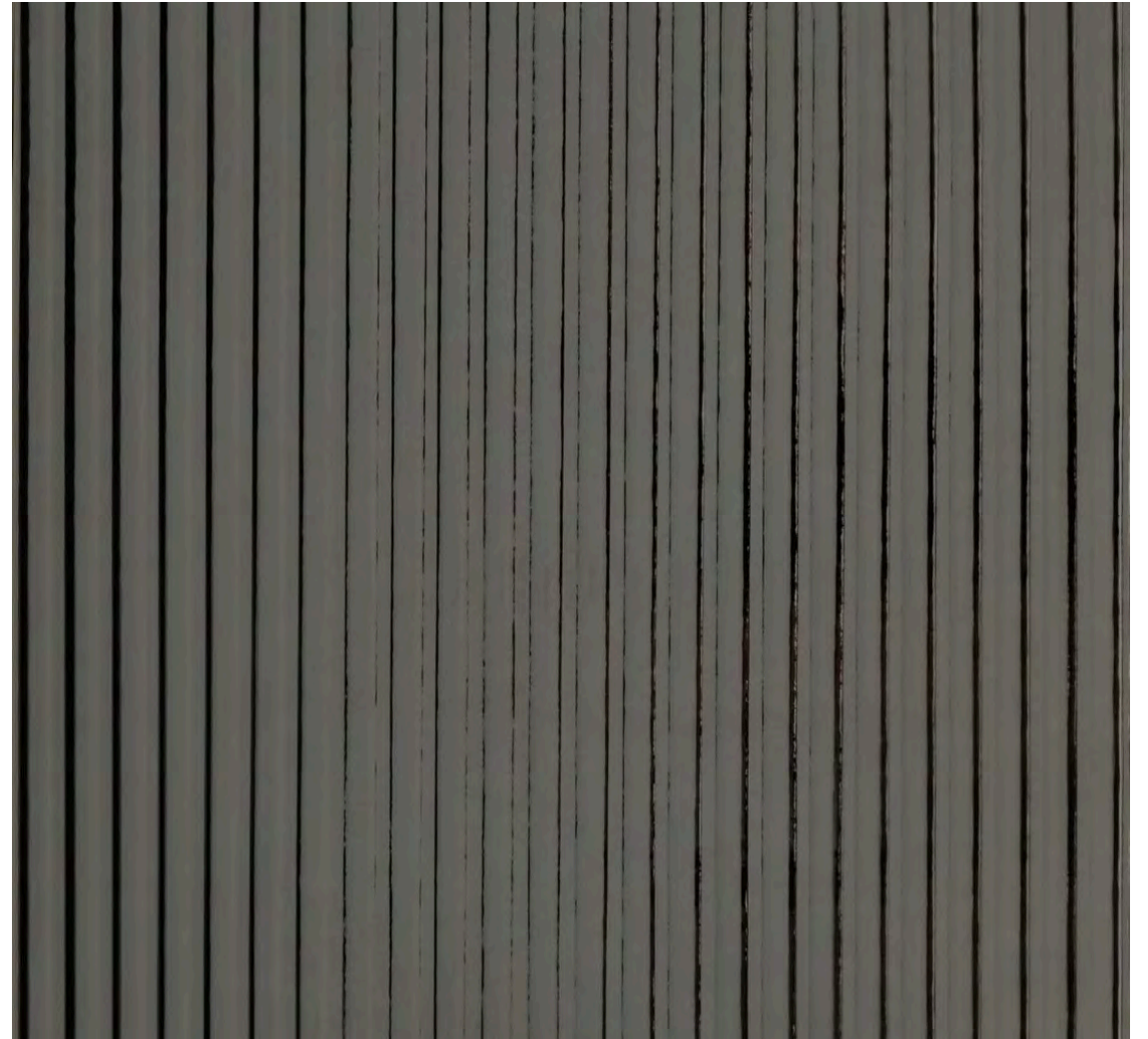
Art. 12791



Copper Real

A212 Linear

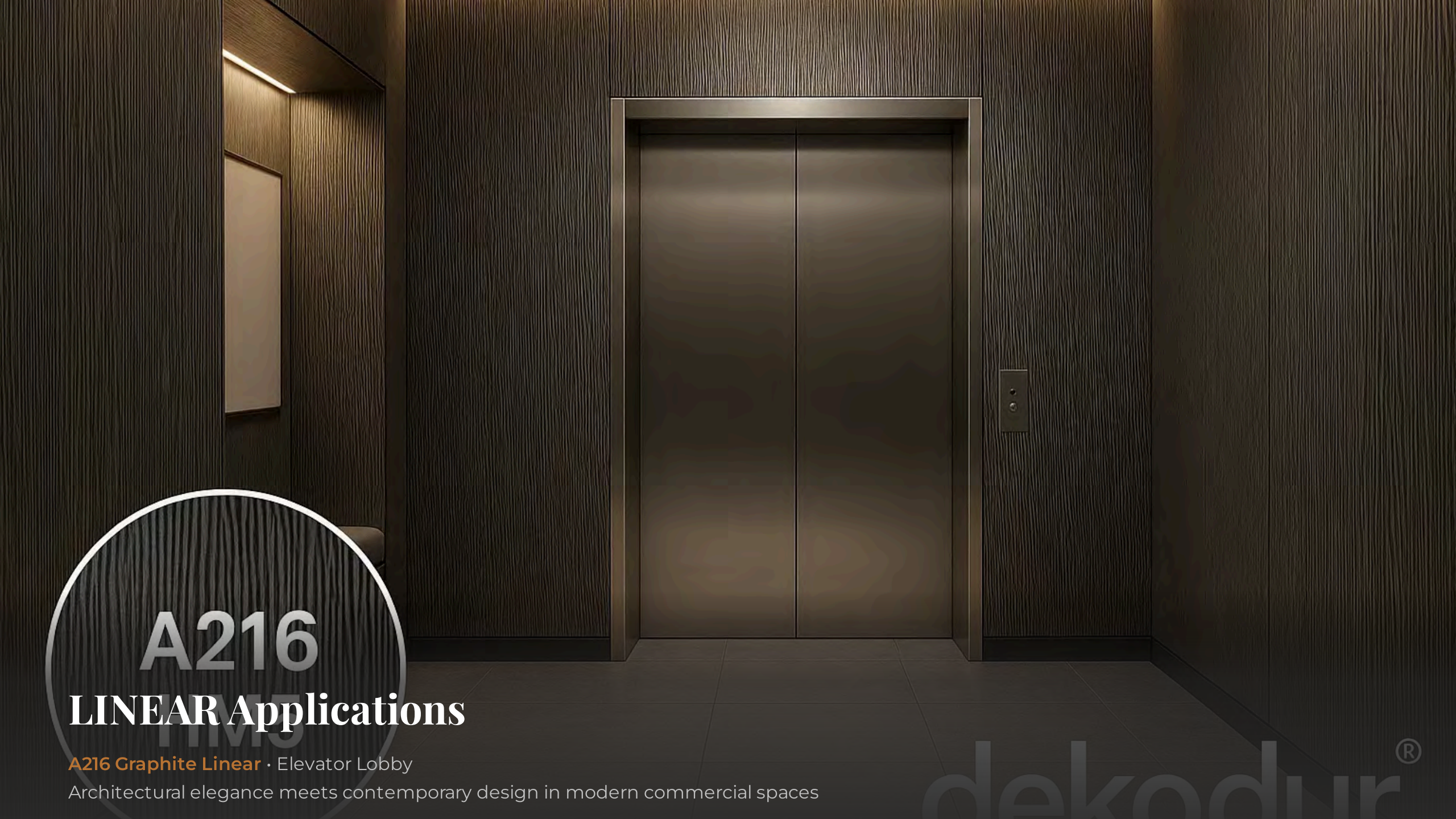
Art. 22432



Graphite Real

A216 Linear

Art. 11923



A216

LINEAR Applications

A216 Graphite Linear • Elevator Lobby

Architectural elegance meets contemporary design in modern commercial spaces

dekodur®



STRUCTURE HM5

WOOD

Fine-textured wood-metal decors with natural haptic quality. The WOOD structure combines organic warmth with metallic sophistication, creating surfaces that feel as authentic as they look.

Characteristics:

- Natural wood texture
- Metallic shimmer
- Tactile depth
- Ideal for residential and hospitality interiors

6 Decors Available



Champagne Grain

A211 Wood

Art. 16889



Copper Silk

A212 Wood

Art. 20202



Graphite Wood

A216 Wood

Art. 22403



Silver Ash

A226 Wood

Art. 22486



Natural Oak Metal

A252 Wood

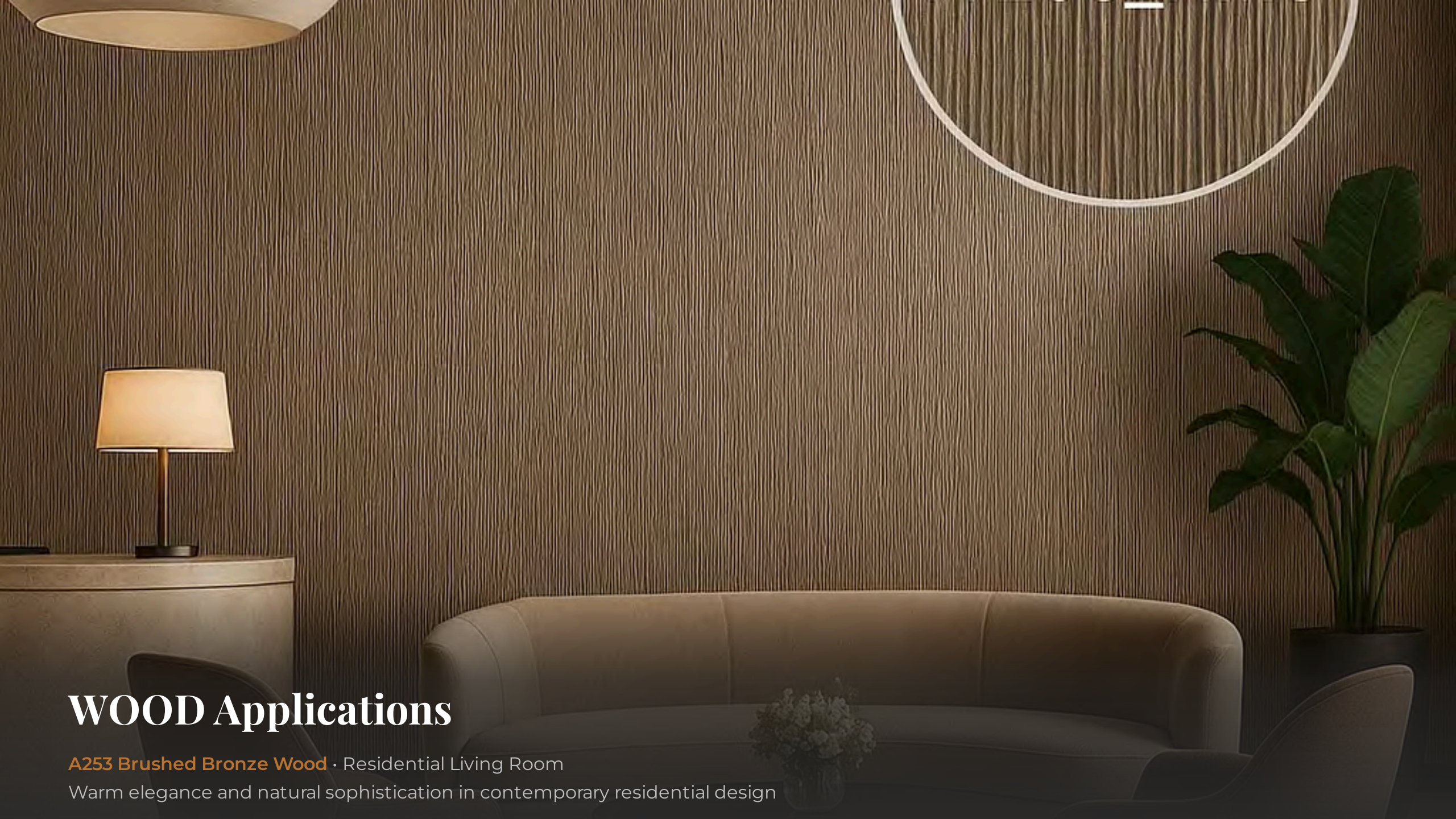
Art. 22404



Brushed Bronze

A253 Wood

Art. 22405



WOOD Applications

A253 Brushed Bronze Wood · Residential Living Room

Warm elegance and natural sophistication in contemporary residential design



STRUCTURE DIA

DIAMANT

Geometric diamond pattern for sophisticated designs. The DIAMANT structure features angular precision and visual depth, creating surfaces that capture light and attention in equal measure.

Characteristics:

- Geometric diamond pattern
- Angular precision
- Visual depth and dimension
- Ideal for statement walls and feature surfaces

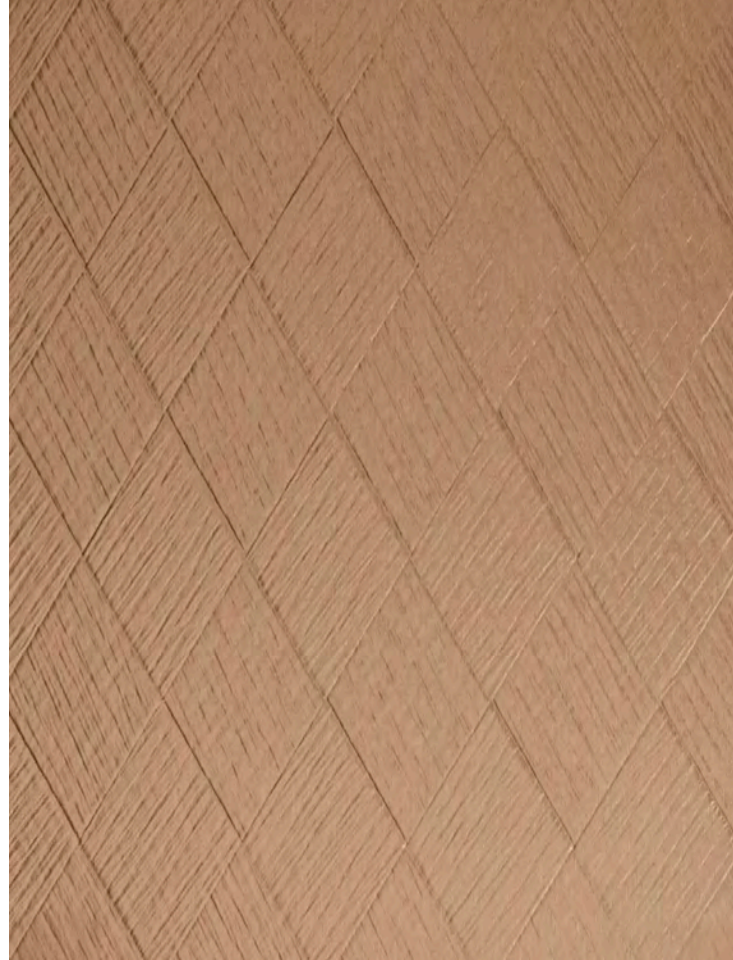
3 Decors Available



Silver Diamant

A226 Diamant

Art. 22481



Copper Diamant

A252 Diamant

Art. 22174



Champagne Diamant

A253 Diamant

Art. 22435



STRUCTURE SQE

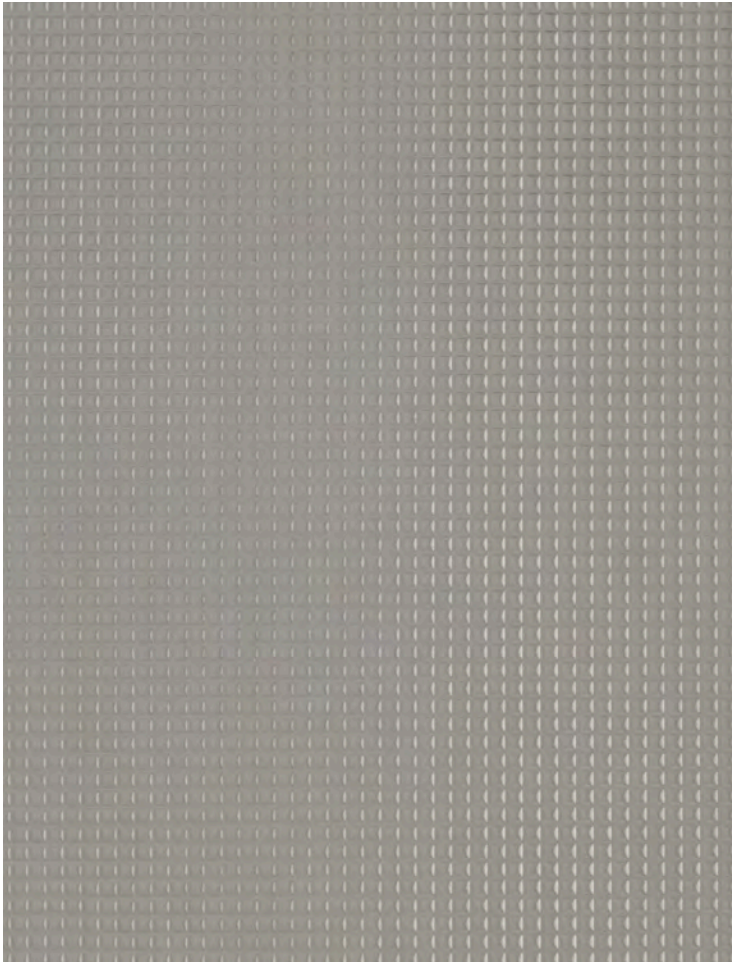
TEXTILE

Structured textile pattern with tactile depth. The TEXTILE structure evokes the appearance of woven fabric, bringing sophisticated texture and visual interest to architectural surfaces.

Characteristics:

- Woven textile appearance
- Tactile depth and texture
- Sophisticated pattern
- Ideal for hospitality and high-end commercial spaces

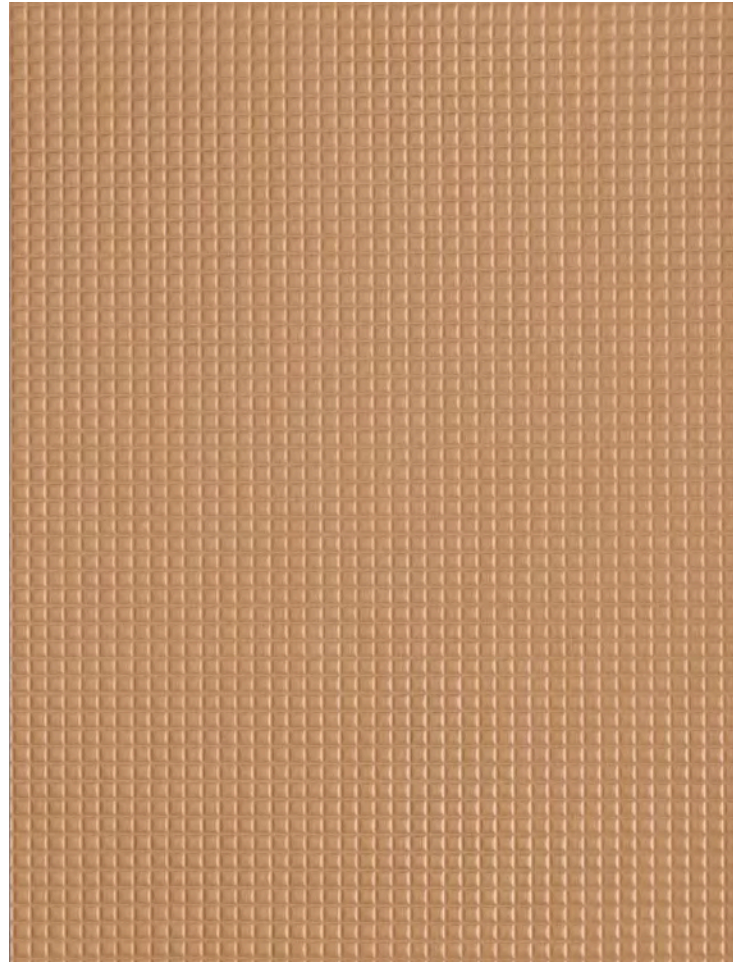
3 Decors Available



Silver Weave

A226 Textile

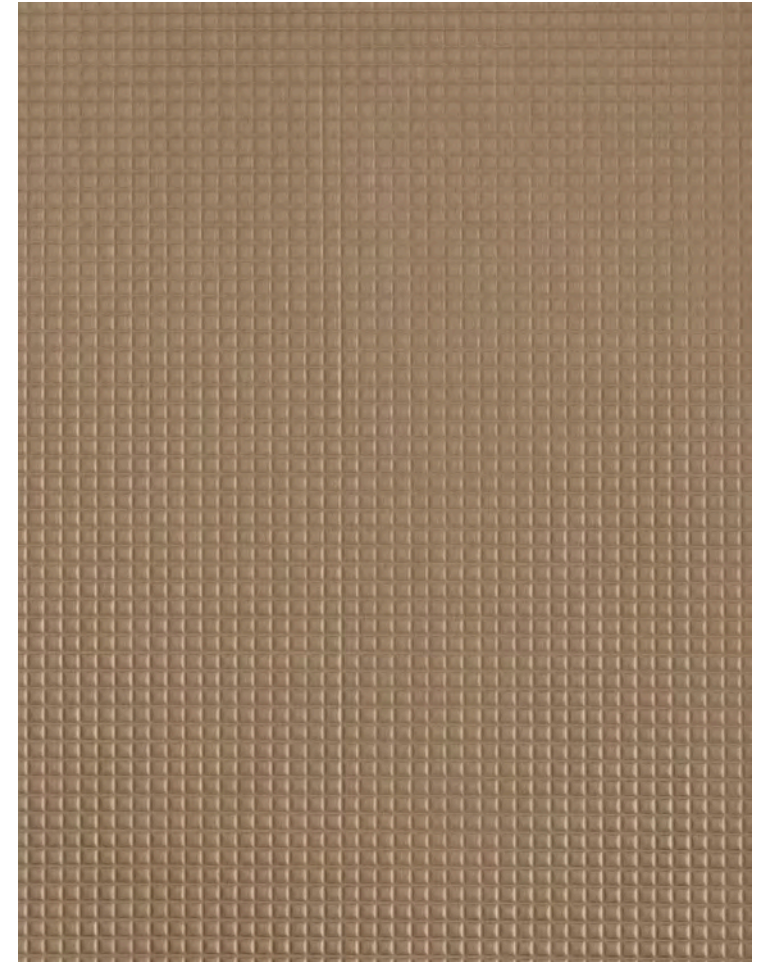
Art. 22498



Copper Weave

A252 Textile

Art. 22400



Champagne Weave

A253 Textile

Art. 22401

STRUCTURE GLA

SMOOTH

Super-matte surface for purist aesthetics. The SMOOTH structure embodies minimalist perfection with its flawless, non-reflective finish that emphasizes form and material purity.

Millfinish Steel

A226 Smooth

Art. 22471

Minimalist perfection in super-matte metallic finish



Cineris

AD01 Smooth
Art. 23275

Warm bronze rust patina with organic depth effect.
Style: New Rustic / Warm Industrial



Aerugo

AD02 Smooth
Art. 23276

Deep anthracite with oxidized structure and
subtle metallic shimmer. Style: Industrial Chic / Dark Elegance

SUSTAINABLE CHOICE

ECO REACH Core

Ultra-Low Formaldehyde Emission

The ECO REACH core variant sets new standards in environmental responsibility and indoor air quality. Certified by EPH Dresden.

- ✓ Formaldehyde emission < 0.005 ppm (DIN 16516)
- ✓ 10× better than REACH E0 standard
- ✓ EPH Dresden certified quality
- ✓ Ideal for health-conscious projects
- ✓ Schools, hospitals, residential spaces
- ✓ Available for all article numbers

DIN 16516 Certified • EPH Dresden

DekoFireSafe® Core

A2-s1,d0 Fire Classification

The DekoFireSafe® core variant provides superior fire protection for public spaces and high-safety requirements. Non-combustible performance.

- ✓ Fire protection class A2-s1,d0 (DIN EN 13501-1)
- ✓ Non-combustible material classification
- ✓ Low smoke production (s1)
- ✓ No flaming droplets (d0)
- ✓ Ideal for public buildings and escape routes
- ✓ Available for all article numbers



Standard Core

Phenolic kraft paper impregnate

The Standard core variant represents decades of proven HPL technology and reliability.

Phenolic kraft paper impregnate construction delivers consistent quality and performance across all applications, with complete article number availability.



Proven
quality

19

All article
numbers



Reliable
choice



A216 Graphite Linear · Commercial Elevator Hall



A216 Graphite Linear · Elevator Interior

Design References

From **commercial elevator lobbies** to **residential living spaces**, from **hospitality interiors** to **corporate environments** — Collection 2026 demonstrates unparalleled versatility and premium quality across diverse architectural applications.

Technical Information

FORMAT

2440 × 1220 mm

Standard HPL panel size

Custom formats available on request

STRUCTURES

610 LINEAR — Vertical linear pattern

HM5 WOOD — Fine-textured wood-metal

DIA DIAMANT — Geometric diamond

SQE TEXTILE — Structured textile

GLA SMOOTH — Super-matte surface

COLOR FAMILIES

Silver · Copper · Champagne · Graphite

CORE VARIANTS

ECO REACH — Formaldehyde < 0.005 ppm

(DIN 16516)

DekoFireSafe® — Fire class A2-s1,d0

(DIN EN 13501-1)

Standard — Phenolic kraft paper

SURFACE PROPERTIES

Genuine metal appearance

Easy to clean

Tactile texture

UV-stable

Scratch-resistant

APPLICATIONS

Elevator lobbies

Commercial interiors

Wall cladding

Residential design

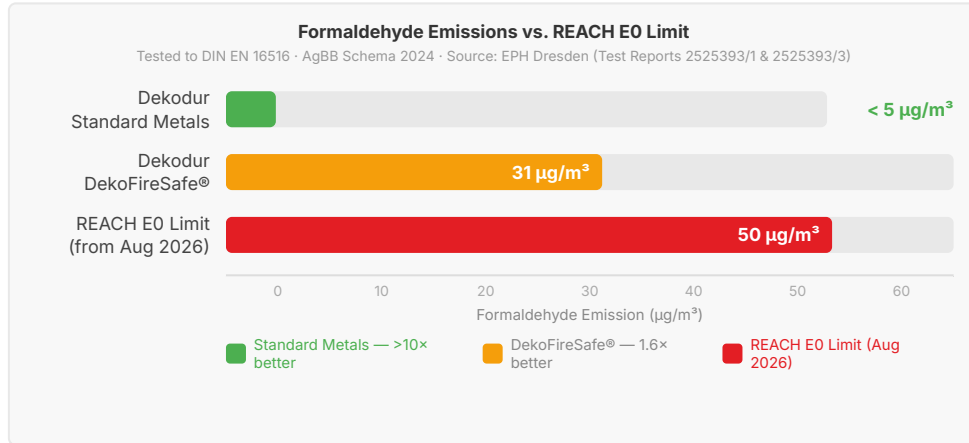
Furniture surfaces

Technical Excellence

PROVEN PERFORMANCE · CERTIFIED QUALITY

FORMALDEHYDE EMISSIONS · DIN EN 16516

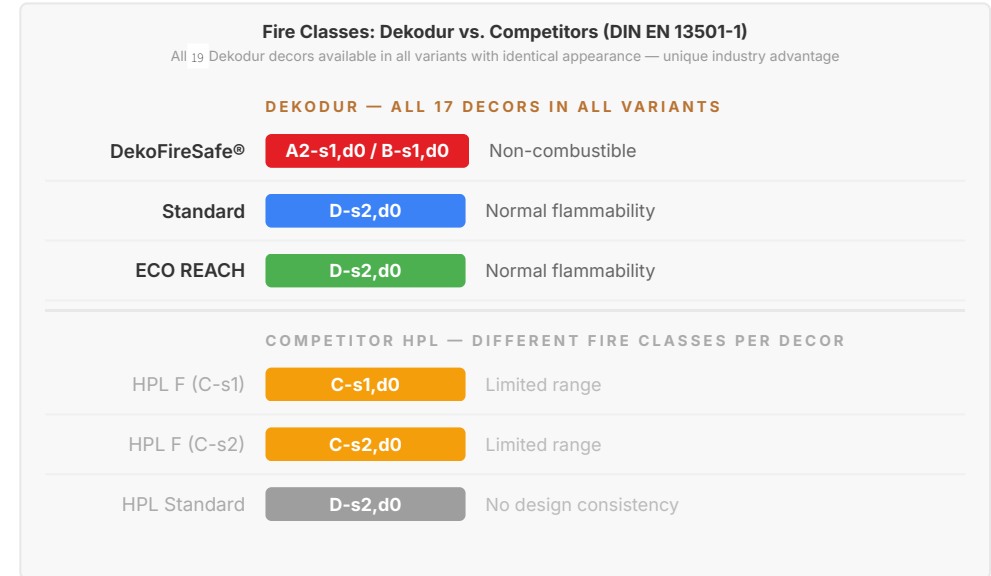
Ultra-Low Emissions



- **Standard Metals:** <math>< 5 \mu\text{g}/\text{m}^3</math> — EPH Dresden certified
- **DekoFireSafe®:** $31 \mu\text{g}/\text{m}^3$ — EPH Dresden certified
- **REACH E0 limit (Aug 2026):** $50 \mu\text{g}/\text{m}^3$ — fully compliant
- **AgBB Schema 2024:** compliant · DIN EN 16516

FIRE SAFETY · DIN EN 13501-1

Fire Classifications



✓ **Unique Advantage:** Consistent design across all fire protection requirements — from standard to non-combustible classification. One design concept, any fire class.

Specifications & Standards

TECHNICAL DATA · CERTIFICATIONS · CORE VARIANTS

TECHNICAL DATA

Technical Specifications

Thickness	0.8 mm (Standard / ECO) 1.2 mm (DekoFireSafe®)
Format	2440 × 1220 mm Standard HPL panel size
Density	approx. 1.35 g/cm³
Weight	≈ 1.08 kg/m² (0.8 mm) ≈ 1.62 kg/m² (1.2 mm)
Surface	Genuine metal layer on HPL substrate
Structures	LINEAR · WOOD DIAMANT · TEXTILE · SMOOTH
Decors	19 exclusive decors
Color families	Silver · Copper Champagne · Graphite
Custom formats	Available on request

All decors comply with DIN EN 438 for high-pressure decorative laminates.

NORMS & CERTIFICATIONS

Standards & Certifications

DIN EN 438

HPL Quality Standard

High-pressure decorative laminates — defines quality requirements for HPL surfaces in architecture and interior design.

DIN EN 13501-1

Fire Classification

Fire classification of construction products. Standard/ECO: D-s2,d0 · DekoFireSafe®: A2-s1,d0 / B-s1,d0

DIN EN 16516

Formaldehyde Emissions

Emission testing for construction products. AgBB Schema 2024 compliant. REACH E0 compliant (< 50 µg/m³).

REACH Regulation (EU)

Ultra-Low Emissions

Standard Metals: < 5 µg/m³ (>10× better than limit) ·
DekoFireSafe®: 31 µg/m³ (1.6× better than limit)

PRODUCT RANGE

Core Variants

Standard

D-s2,d0 · Normal flammability

High-quality phenolic resin core. Ideal for interior design, furniture, and wall cladding in standard applications.

ECO REACH

D-s2,d0 · Sustainable core

Made from sugar cane bagasse. Formaldehyde emission < 0.005 ppm — more than 10× better than REACH E0 limit.

DekoFireSafe®

A2-s1,d0 / B-s1,d0 · Non-combustible

Fire-resistant mineral core for highest fire protection requirements in public buildings, transport, and high-rise architecture.

✓ **All 19 decors available in all three variants** with identical appearance. Consistent design across all fire protection requirements.

Processing & Care

INSTALLATION · MAINTENANCE · STORAGE

INSTALLATION

Processing Guidelines

1

Cutting

Use carbide-tipped blades (min. 60 teeth). Score and snap for straight cuts. Always cut with the decorative face upward to prevent chipping.

2

Drilling

Use carbide-tipped drill bits at moderate speed. Pre-drill pilot holes for screws to prevent cracking. Support the laminate from below.

3

Bonding

Use contact adhesives designed for HPL. Apply to both surfaces, allow to dry until tacky. Use a roller for full contact and air bubble removal.

4

Edge Finishing

Router with carbide bit for clean edges. Sand with fine-grit sandpaper (220+). Seal exposed edges against moisture. Edge banding available on request.

MAINTENANCE & STORAGE

Care & Storage

Daily Cleaning

Wipe with a damp cloth and mild soap solution. Dry immediately with a soft, lint-free cloth. For stubborn stains, use a mild household cleaner with a soft cloth.

Avoid: Abrasive cleaners, steel wool, bleach, acetone, or harsh solvents that may damage the genuine metal surface.

Maintenance

Genuine metal surfaces develop a natural patina over time — this is characteristic and adds authentic character. For consistent appearance, clean regularly with recommended products. Avoid prolonged contact with acidic or alkaline substances.

Storage

Store flat in a dry, climate-controlled environment (15–25°C, max. 65% relative humidity). Protect from direct sunlight. Stack with protective interleaving sheets, max. 10 panels.

Tip: Acclimatize panels to the installation environment for 24–48 hours before processing to prevent dimensional changes.

Build-to-Order Excellence

FLEXIBILITY · QUALITY · SPEED

19 Decors × 3 Variants

Every decor available in Standard, ECO REACH, and DekoFireSafe® with **identical appearance**. One design concept — any fire protection requirement.

Made to Order

No inventory risk. Panels are produced to your exact specifications. Custom formats and special configurations available on request.

Reliable Delivery

Consistent lead times with express service available. Direct from our production facility in Hirschhorn am Neckar, Germany.

LEAD TIMES

Delivery Overview

CORE VARIANT	STANDARD LEAD TIME	EXPRESS
Standard	2–3 weeks	Available
ECO REACH	2–3 weeks	Available
DekoFireSafe®	3–4 weeks	Available

Lead times may vary depending on order volume. Contact us for exact delivery dates and project-specific quotations.

Sample Box Available: Request our Genuine Metal HPL sample box with all 19 decors in all structures. Contact info@dekodur.de to order your complimentary sample set.

GET IN TOUCH

Contact Us

DI dekodur International

GMBH & CO. KG

✉ info@dekodur.de
General inquiries & quotations

☎ **+49 (0) 6272 689-0**
Monday – Friday, 8:00 – 17:00

🌐 [dekodur.com](https://www.dekodur.com)
Full product range & technical data

Langenthaler Str. 4 · 69434 Hirschhorn am Neckar · Germany



DI Dekodur International

GmbH & Co KG

ADDRESS

Langenthaler Str. 4
69434 Hirschhorn, Germany

PHONE

+49 6272 689-0

EMAIL

info@dekodur.de

WEBSITE

dekodur.world
dekodur.de
dekodur.com

dekodur[®]

Collection 2026 — Genuine Metal HPL

dekodur.com